

SCHEDULE			
PART	PART OF LOT	CONCESSION	ALL OF PIN
1	32	4	24754-0261
2			
3			

PART 3 IS SUBJECT TO AN EASEMENT AS IN INSTRUMENT NO. H782489

I require this plan to be deposited under the Land Titles Act.

**PLAN 20R-**

Received and Deposited

Date \_\_\_\_\_ Date \_\_\_\_\_

Andrew Musil, O.L.S.  
Ontario Land Surveyor

Land Registrar for the Land Titles Division of Halton (No. 20)

**METRIC:** Distances and Coordinates shown on this plan are in metres and can be converted to feet by dividing by 0.3048

**PLAN OF SURVEY OF PART OF LOT 32 CONCESSION 4, SOUTH OF DUNDAS STREET TOWN OF OAKVILLE REGIONAL MUNICIPALITY OF HALTON**

(FORMERLY GEOGRAPHIC TOWNSHIP OF TRAFALGAR)

**J.H. Gelbloom Surveying Limited  
Ontario Land Surveyor  
2024**

SCALE 1 : 200

**METRIC**  
Distance shown on this plan are in metric and can be converted to feet by dividing by 0.3048.

**LEGEND**

- Survey Monument Found
- Survey Monument Set
- IB Standard Iron Bar
- Iron Bar
- Short Stand Iron Bar
- Witness
- (WIT)
- Fred G. Cunningham Inc., O.L.S. (950)
- McCormell Maughan Ltd., O.L.S. (760)
- (RPE)
- P1 R-PRE Surveying Ltd., O.L.S. dated December 8, 2017
- P2 Plan 20R-12966
- P3 Registered Plan M-257
- P4 Plan 20R-22510
- N Dundas North
- S Dundas South
- E Dundas East
- W Dundas West
- SPC Specified Control Point

**SURVEYOR'S CERTIFICATE**

I CERTIFY THAT:

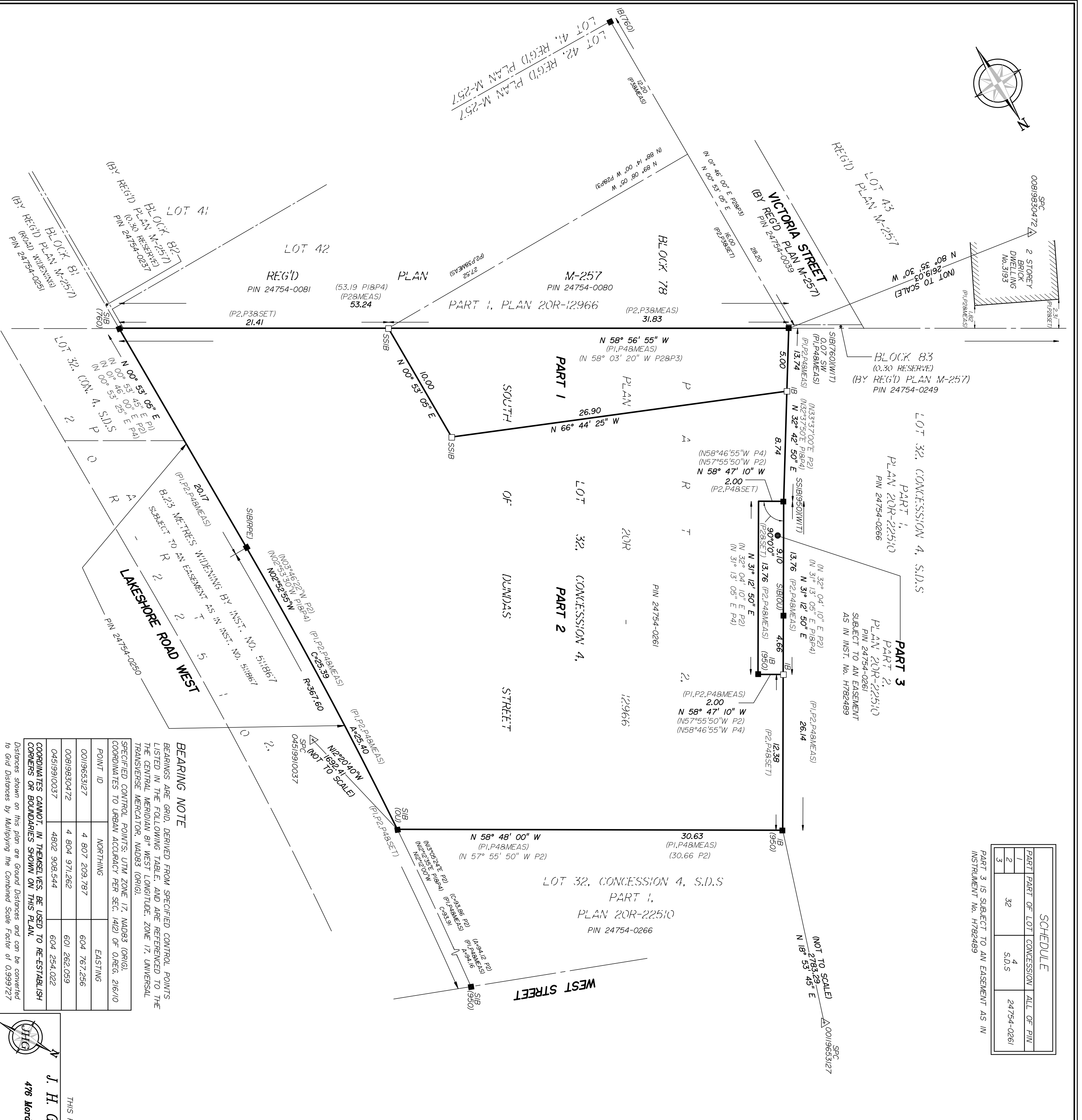
- This survey and plan are correct and in accordance with the Surveys Act, the Surveyors Act, the Land Titles Act and the regulations made under them.
- The survey was completed on the 17th day of July, 2024.

Date \_\_\_\_\_ Andrew Musil, O.L.S.

THIS PLAN OF SURVEY RELATES TO AOLS PLAN SUBMISSION NUMBER V-

**J. H. Gelbloom Surveying Limited**  
Ontario Land Surveyor  
478 Morden Road, Unit 102, Oakville, Ont., L6K 3M4  
office@jhsurveying.ca  
Phone:(905) 398-8210

Party Chief: D.L./M.A.  
Drawn By: N.A.  
Project: 20-122  
Checked By: A.R.



**BEARING NOTE**

BEARINGS ARE GRID, DERIVED FROM SPECIFIED CONTROL POINTS LISTED IN THE FOLLOWING TABLE, AND ARE REFERENCED TO THE CENTRAL MERIDIAN OF WEST LONGITUDE, ZONE 17, UNIVERSAL TRANSVERSE MERCATOR, NAD83 (ORIG).

SPECIFIED CONTROL POINTS: UTM ZONE 17, NAD83 (ORIG)			
POINT ID	NORTHING	EASTING	COORDINATE
0019653127	4 807 209.787	604 767.256	21610
00819830472	4 804 971.262	601 262.059	21610
0451910037	4802 908.544	604 254.022	21610

COORDINATES CANNOT, IN THEMSELVES, BE USED TO RE-ESTABLISH CORNERS OR BOUNDARIES SHOWN ON THIS PLAN.  
Distances shown on this plan are Ground Distances and can be converted to Grid Distances by Multiplying the Combined Scale Factor of 0.999727